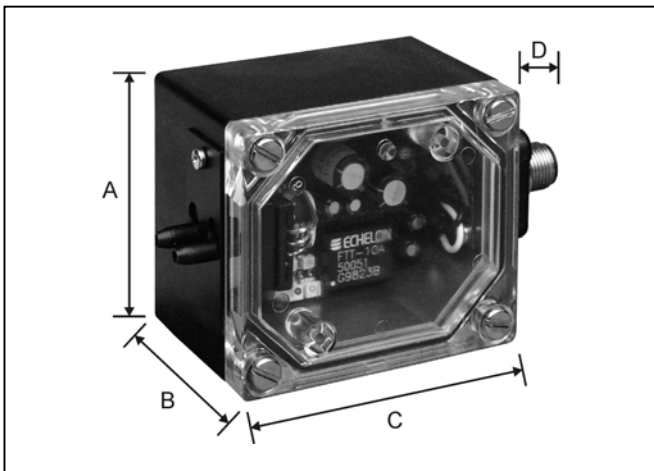


LON Pressure Sensor SK...-L

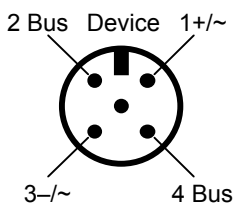
Technical Data



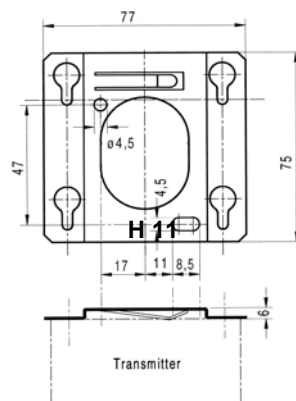
	A	B	C	D
mm	61	51	72	25

Types	Pressure range / Pa	Max. permissible pressure / Pa
SKN1250-L	0...1250	4000

Connection diagram



IP 65



Features

- LONMark® pressure profile #1030
- Uses Echelon LONTalk® protocol
- Direct mounting on the pressure line
- Factory-configured default parameters
- LON service and operation LED visible without disassembly
- Protection class IP 65
- Easy plug connection M 12
- Uses FTT 10A Transceiver
- Barcode with Neuron ID outside

Technical Data

Cable entry:	Plug connection M 12 four-pole (a four- or five-pole plug may be used)
Operating voltage:	24 V AC \pm 20 % or 24 V...36 V DC
Pressure port:	4.8 mm dia
Sensor materials:	Glass filled nylon, ceramic AL ₂ O ₃ , silicone RTV-gluе, bond wires
Linearity:	\leq 1 % FS
Installation:	With mounting bracket H 11 direct on the wall included in delivery + high pressure port – low pressure port
Max. medium temp.:	-25...+85 °C
Compensated temperature range:	0...+50 °C
Measuring method:	piezoresistive
Power consumption:	max. 1 W
Transceiver and profile:	FTT 10A Profile 1030#
Protection class:	IP 65
Medium:	Air, non-inflammable and non-aggressive gases
Accessories included in delivery:	Plug M 12 five-pole 2 m of silicone hose 2 joining pipes with extensions Mounting bracket H 11